

KALIMBA
KALIMBA
KALIMBA
KALIMBA
KALIMBA
KALIMBA
KALIMBA

By Janice Eckworth
SANISI MUSIC STUDIO

This book is for use of the
Kalimba Class at Sanisi Music Studio
Thank you for your patronage!

This book is dedicated to my husband.
He bought my first kalimba. ♥

KALIMBA

Chapter 1

- First Notes
- Left & Right Hand
- Rhythm: ♪ ♪ ◦

SANISI MUSIC STUDIO



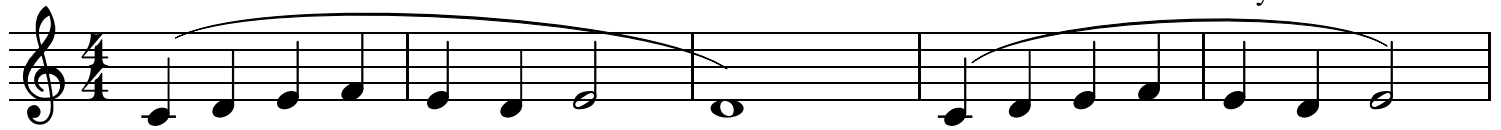
A musical staff in 4/4 time showing the first notes of the kalimba. The notes are: D'', B', G', E', C', A, F, D, C, E, G, B, D', F', A', C'', E''. Below the staff, the corresponding tine numbers are listed: 2'', 7°, 5°, 3°, 1°, 6, 4, 2, 1, 3, 5, 7, 2°, 4°, 6°, 1'', 3''.

C is the lowest tine on a 17-tine kalimba. It is called Middle C (or C4 on piano). Middle C sits on its own ledger line below the treble staff. The notes climb alternating between space and line.

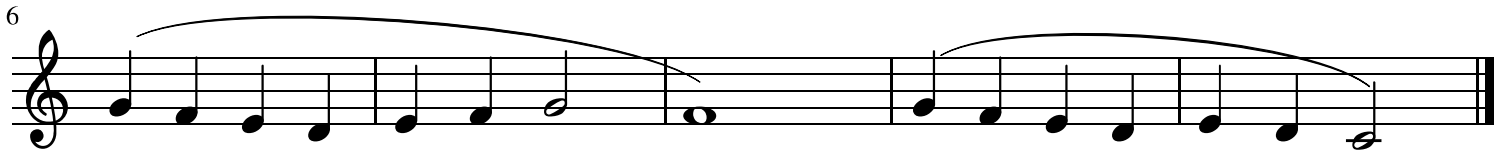
A musical staff in 4/4 time showing the first notes of the kalimba. The notes are: C, E, G, B, D, F, A, C'. Below the staff, the corresponding tine numbers are listed: 1, 3, 5, 7, 2, 4, 6, 1'. Below the numbers, the hand assignments are listed: Right, Right, Right, Right, Left, Left, Left, Left.

Step with Your Hands

By Janice Eckworth



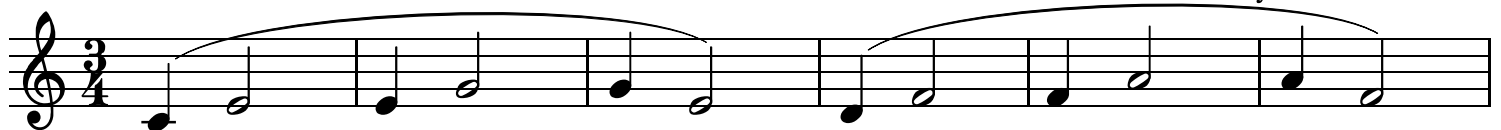
C D E F E D E D C D E F E D E
 1 2 3 4 3 2 3 2 1 2 3 4 3 2 3



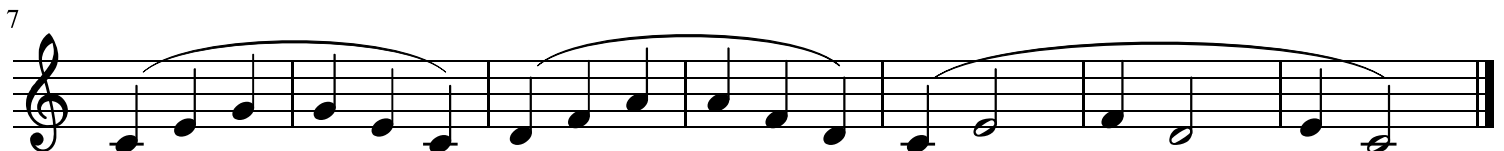
G F E D E F G F G F E D E D C
 5 4 3 2 3 4 5 4 5 4 3 2 3 2 1

Skip to Each Side

By Janice Eckworth



C E E G G E D F F A A F
 1 3 3 5 5 3 2 4 4 6 6 4



C E G G E C D F A A F D C E F D E C
 1 3 5 5 3 1 2 4 6 6 4 2 1 3 4 2 3 1

See if you can play the notes and rhythm to guess the name of the melody.
 Try playing for friends and family to have them guess, too!

Mystery Song #1:

E D C E D C
 3_ 2_ 1 3_ 2_ 1
 Right Left *Right* Right Left *Right*

5

C C C C D D D D E D C
 1 1 1 1 2 2 2 2 3_ 2_ 1
Left Right Left Right Left Left Left Left Right Left *Right*

Mystery Song #2:

G E G G E G G E A G G E
 5_ 3_ 5 5 3_ 5 5 3 6 5 5 3_

5

F F D D F F D G F E D E C C
 4 4 2 2 4 4 2_ 5 4 3 2 3 1 1

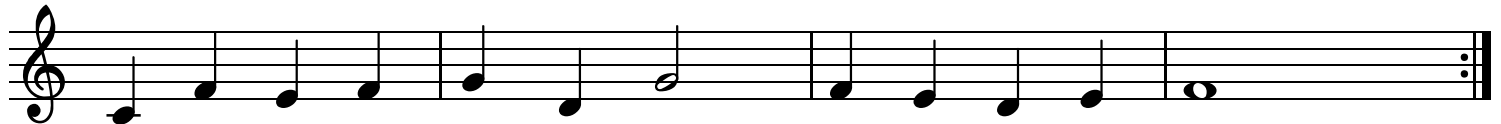
Mystery Song #3:

E D C D E E E D D D E G G
 3 2 1 2 3 3 3_ 2 2 2_ 3 5 5_

5

E D C D E E E E D D E D C
 3 2 1 2 3 3 3 3 2 2 3 2 1


Mystery Song #4:



Musical notation for Mystery Song #4, consisting of a single staff with a treble clef and a key signature of one sharp (F#). The melody is written in a 4/4 time signature. The notes are: C4, F4, E4, F4, G4, D4, G4, F4, E4, D4, E4, F4. The notes are grouped into two measures of four notes each, with a final whole note F4. Below the staff are the letter names and fingerings for each note.

C F E F G D G F E D E F
1 4 3 4 5 2 5 4 3 2 3 4


Mystery Song #5:



Musical notation for Mystery Song #5, consisting of a single staff with a treble clef and a key signature of one sharp (F#). The melody is written in a 4/4 time signature. The notes are: E4, E4, F4, G4, G4, F4, E4, D4, C4, C4, D4, E4, E4, D4, D4. The notes are grouped into two measures of four notes each, with a final whole note D4. Below the staff are the letter names and fingerings for each note.

E E F G G F E D C C D E E D D
3 3 4 5 5 4 3 2 1 1 2 3 3 2 2


5



Musical notation for Mystery Song #5, consisting of a single staff with a treble clef and a key signature of one sharp (F#). The melody is written in a 4/4 time signature. The notes are: E4, E4, F4, G4, G4, F4, E4, D4, C4, C4, D4, E4, D4, C4, C4. The notes are grouped into two measures of four notes each, with a final whole note C4. Below the staff are the letter names and fingerings for each note.

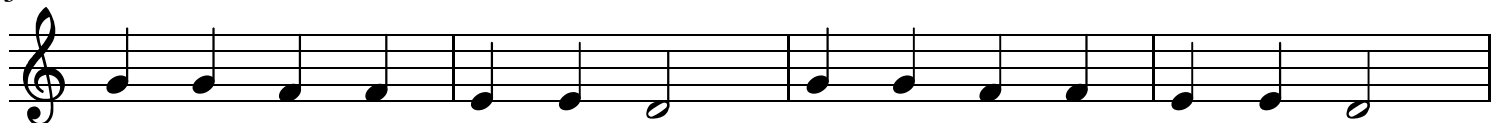
E E F G G F E D C C D E D C C
3 3 4 5 5 4 3 2 1 1 2 3 2 1 1

Mystery Song #6:



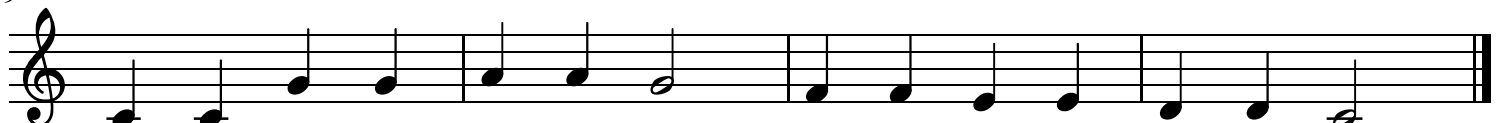
Musical notation for Mystery Song #6, consisting of a single staff with a treble clef and a key signature of one sharp (F#). The melody is written in a 4/4 time signature. The notes are: C4, C4, D4, E4, E4, D4, G4, G4, F4, E4, E4, D4, C4. The notes are grouped into two measures of four notes each, with a final whole note C4.

5



Musical notation for Mystery Song #6, consisting of a single staff with a treble clef and a key signature of one sharp (F#). The melody is written in a 4/4 time signature. The notes are: C4, C4, D4, E4, E4, D4, G4, G4, F4, E4, E4, D4, C4. The notes are grouped into two measures of four notes each, with a final whole note C4.

9

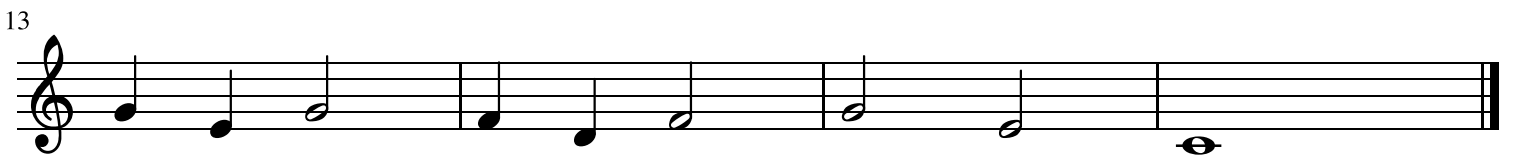
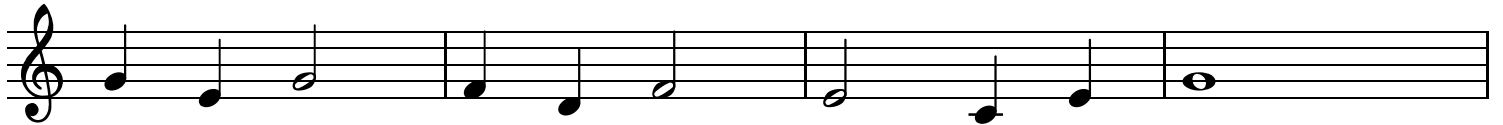
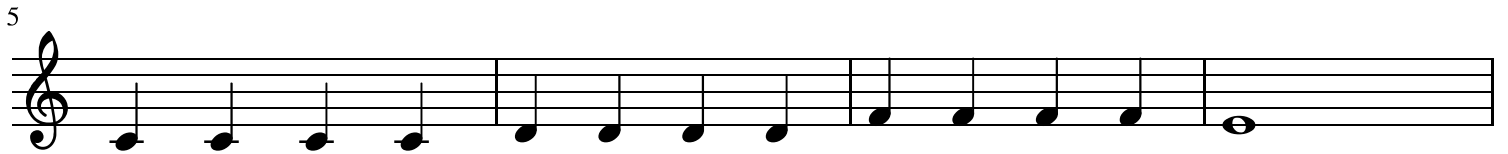
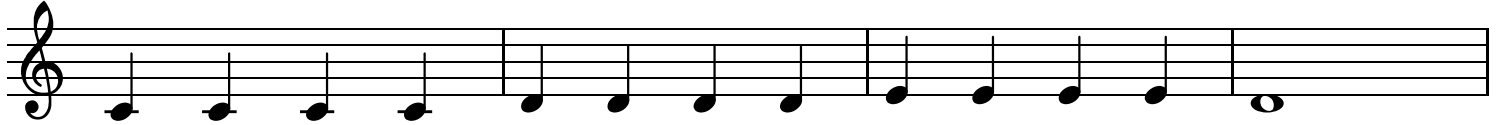


Musical notation for Mystery Song #6, consisting of a single staff with a treble clef and a key signature of one sharp (F#). The melody is written in a 4/4 time signature. The notes are: C4, C4, D4, E4, E4, D4, G4, G4, F4, E4, E4, D4, C4. The notes are grouped into two measures of four notes each, with a final whole note C4.

Red Ripples

By Janice Eckworth

If you are interested in learning how to read sheet music,
here is an opportunity to practice reading the notes and intervals in this melody:



C C C C D D D D

E E E E D _ _ _

C C C C D D D D

F F F F E _ _ _

G E G _ F D F _

E _ C E G _ _ _

G E G _ F D F _

G _ E _ C _ _ _

1 1 1 1 2 2 2 2

3 3 3 3 2 _ _ _

1 1 1 1 2 2 2 2

4 4 4 4 3 _ _ _

5 3 5 _ 4 2 4 _

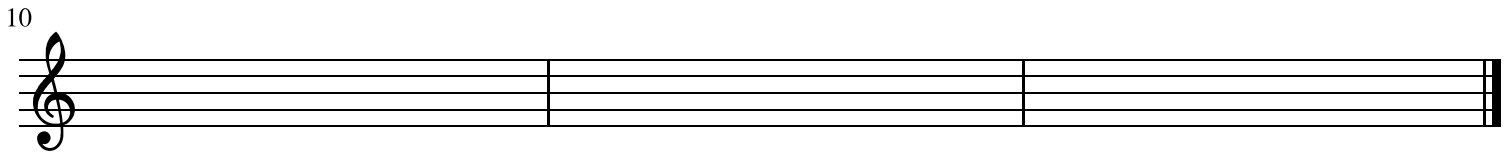
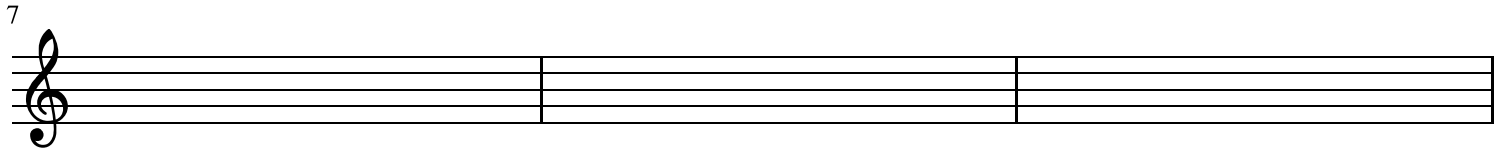
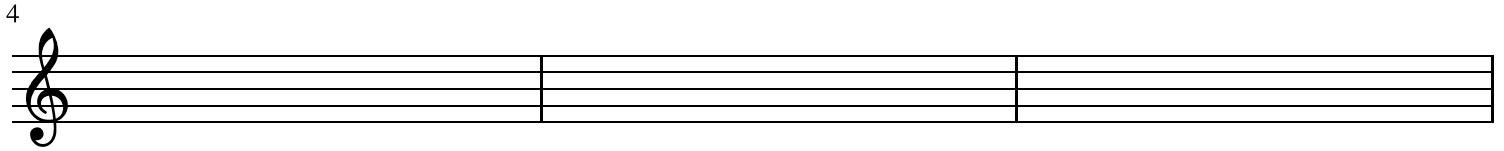
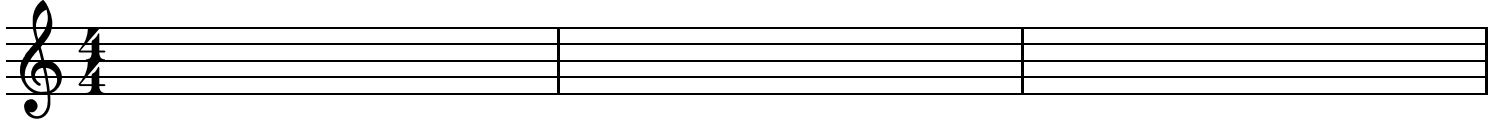
3 _ 1 3 5 _ _ _

5 3 5 _ 4 2 4 _

5 _ 3 _ 1 _ _ _

Composing Challenge #1:

Using C, E, G, and C' make some patterns using whole, half, and quarter notes.



Composing Challenge #2

Fill in the empty measures with your own creations! Remember to have each measure add up to 4 beats.

4

C E G_ G G E_
1 3 5_ 5 5 3_

5

F F D_ E G E_
4 4 2_ 3 5 3_

9

F A F_ G E C_
4 6 4_ 5 3 1

Mystery Songs Revealed:

6: Twinkle, Twinkle Little Star
5: Ode to Joy
4: Aura Lea

3: Mary, Had a Little Lamb
2: Rain, Rain Go Away
1: Hot Cross buns